



16591/3886  
September 16, 2011

## **PUBLIC NOTICE (15-11)**

All interested parties are notified that an application has been received from Florida Department of Transportation (FDOT), District 4, by the Commander, Seventh Coast Guard District, for approval of location and plans for the replacement of a single-leaf, rolling lift, single-track railroad bridge across a navigable waterway of the United States.

**WATERWAY AND LOCATION:** South Fork of the New River, mile 2.8, Ft. Lauderdale, Broward County, Florida.

**CHARACTER OF WORK:** The FDOT is proposing to replace the existing moveable railroad bridge (a 1926 Scherzer rolling lift) that has exceeded its original design life and is not a candidate for rehabilitation. FDOT owns the right-of-way and bridge, while FDOT and CSX Transportation, Inc., share maintenance responsibilities. The proposed replacement bridge would be constructed on a new alignment immediately west (upstream) of the existing bridge. The overall length of the new bridge will be 265.13 feet between abutments, and the out-to-out width will be 22.50 feet. Rail traffic (freight only) will be maintained on the existing bridge until the completion of the new bridge. Existing foundation piles within the navigational channel will be removed in their entirety, and piles outside of the navigational channel will be removed to 2 feet below the natural bottom of the waterway.

### **Navigational Clearances:**

#### **Proposed Bridge:**

**Horizontal Clearance:** 70.0 feet normal to axis of channel between fenders

**Vertical Clearance:** 6.0 feet above MHW in the closed position; 55 feet in the open position

#### **Existing Bridge:**

**Horizontal Clearance:** 56 feet normal to axis of channel between fenders

**Vertical Clearance:** 2 feet above MHW in the closed position; 55 feet in the open position

### **ENVIRONMENTAL CONSIDERATIONS:**

The U.S. Coast Guard, the lead federal agency, has reviewed the environmental assessment prepared by the applicant and has made a determination that the proposed action will not have a significant impact for purposes of the National Environmental Policy. The documents are available for review at the above address, Monday through Friday, 7:30 a.m. to 5:00 p.m. The bridge is located in the floodplain. The 100-year flood elevation is +0.60 feet, mean sea level while the low member elevation of the proposed bridge is 3.73 feet. Approximately 6,491.5 cubic yards of fill material (concrete foundation) will be placed below the MHW line. Water

Quality Certification (WQC) pursuant to P. L. 92-500 (as amended) has not yet been issued by the South Florida Water Management District, but was applied for by FDOT in July 2011.

In compliance with Section 106 of the National Preservation Act of 1966 (as amended) a Cultural Resources Assessment Survey was conducted. The subject bridge (8BD3340) was previously determined eligible for listing in the National Register of Historic Places in 2001. Through the Section 106 process, the preferred in-situ preservation was determined to be in conflict with navigational purposes, and plans for relocation to an alternate location (a new park, downstream) are under development. Also, the CSX railway segment is considered potentially eligible as a contributing element of a potential linear historic district. There is one public park, Flamingo Park, within a ½ mile radius of the proposed project site, and no impacts to the park are anticipated.

The proposed project will impact only barren estuarine sand bottom, with approximately 0.055 acre of direct impact and 0.053 acre of indirect (shading) impact. Therefore, no wetland mitigation is required. The Coast Guard has completed Essential Fish Habitat (EFH) consultation requirements of the Magnuson-Stevens Fishery Conservation and Management Act. The National Marine Fisheries Service concurred with our determination of no effect on EFH or federally managed fisheries in the project region, and no effect on any threatened or endangered species under their purview. Our final determination relative to project impacts and the need for mitigation measures is subject to review by and coordination with the National Marine Fisheries Service. As a result of coordination with the U.S. Fish & Wildlife Service and the Florida Fish and Wildlife Conservation Commission, the construction contract will include protection commitments for the West Indian manatee and the wood stork, including FWC Standard Manatee Conditions for In-Water Work, and Section 7 consultation on appropriate mitigation for any habitat impacts that affect the wood stork. No critical habitat impacts are anticipated.

#### **SOLICITATION OF COMMENTS:**

Mariners are requested to comment on navigational clearances, the placement of a bridge protective fendering system and other navigational safety issues, including need for clearance gauges and extent of nighttime navigation past the bridge site.

Interested parties are requested to express their views, in writing, on the proposed bridge project including its possible impact on minority and/or low income population, if any, giving sufficient detail to establish a clear understanding of their reasons for support of or opposition to the proposed work. Comments will be received for the record at the Office of the Commander, (dpb), Seventh Coast Guard District, 909 Southeast 1st Avenue, Suite 432, Miami, Florida 33131-3050, through October 17, 2011. These comments will be made part of the case record.

The project manager for this application is Miss Evelyn Smart. She can be contacted by telephone at (305) 415-6989 or by e-mail at [Evelyn.Smart@uscg.mil](mailto:Evelyn.Smart@uscg.mil).

Map of location and plans attached.

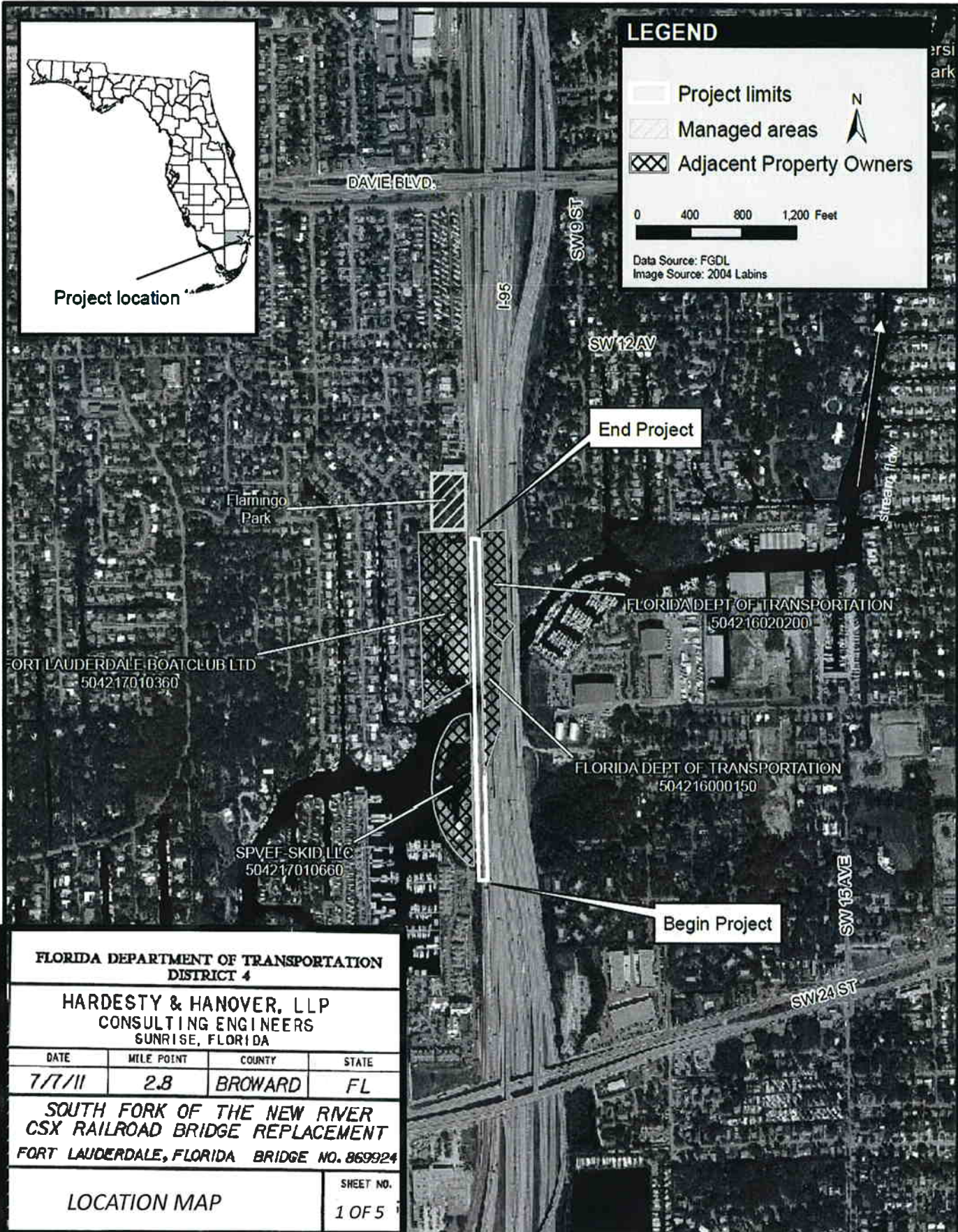


**LEGEND**

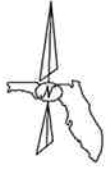
- Project limits
- Managed areas
- Adjacent Property Owners

0 400 800 1,200 Feet

Data Source: FGDL  
Image Source: 2004 Labins



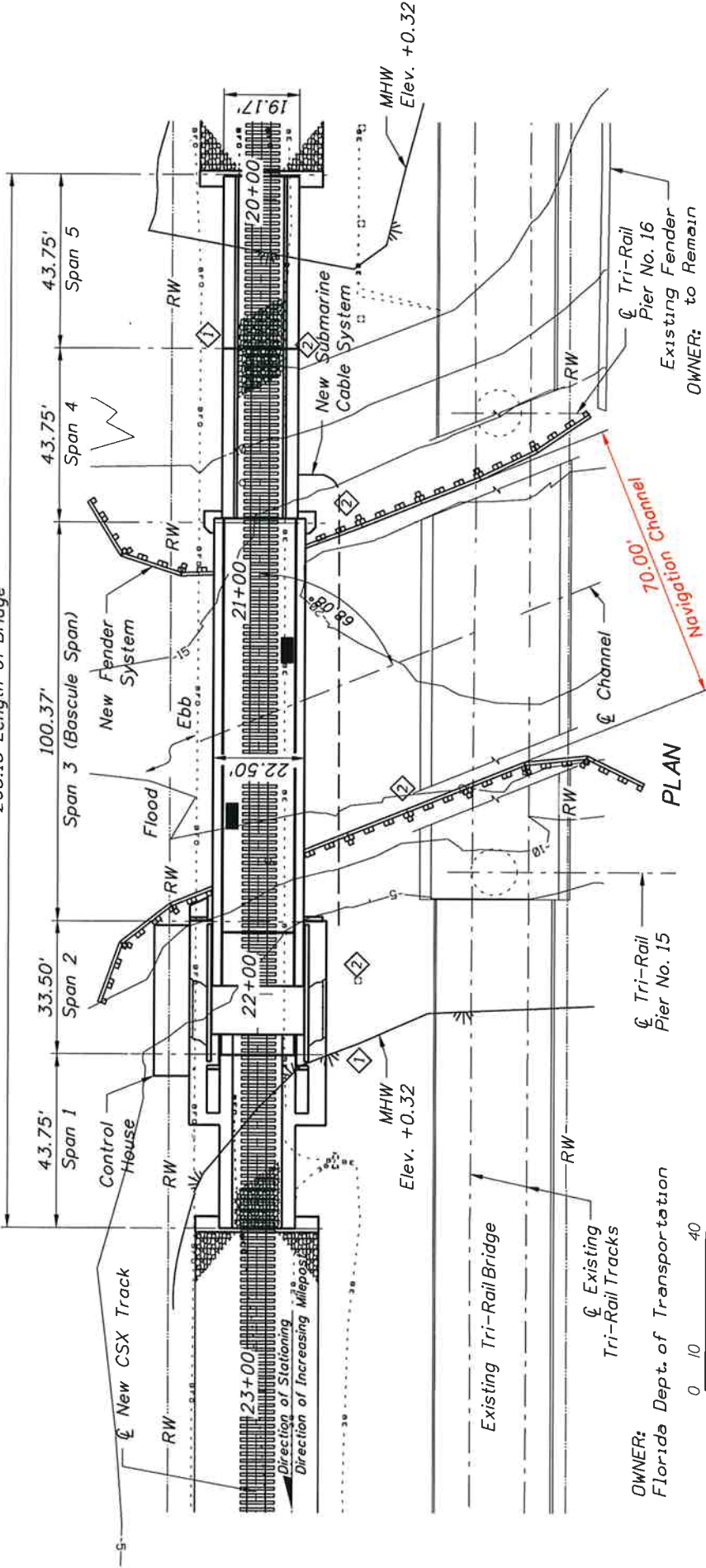
<b>FLORIDA DEPARTMENT OF TRANSPORTATION DISTRICT 4</b>			
<b>HARDESTY &amp; HANOVER, LLP CONSULTING ENGINEERS SUNRISE, FLORIDA</b>			
DATE	MILE POINT	COUNTY	STATE
7/7/11	2.8	BROWARD	FL
<b>SOUTH FORK OF THE NEW RIVER CSX RAILROAD BRIDGE REPLACEMENT FORT LAUDERDALE, FLORIDA BRIDGE NO. 869924</b>			
LOCATION MAP			SHEET NO. 1 OF 5



OWNER:  
Fort Lauderdale Boat Club, Ltd.

OWNER:  
SPVEF-SKID, LLC

265.13' Length of Bridge



OWNER:  
Florida Dept. of Transportation



LOCATION	DESCRIPTION	QUANTITY (CY)
①	Outfall and Pipe Excavation	0.86
②	Substructure and Fender Fill	6491.54

*Approved*  
7/29/2011

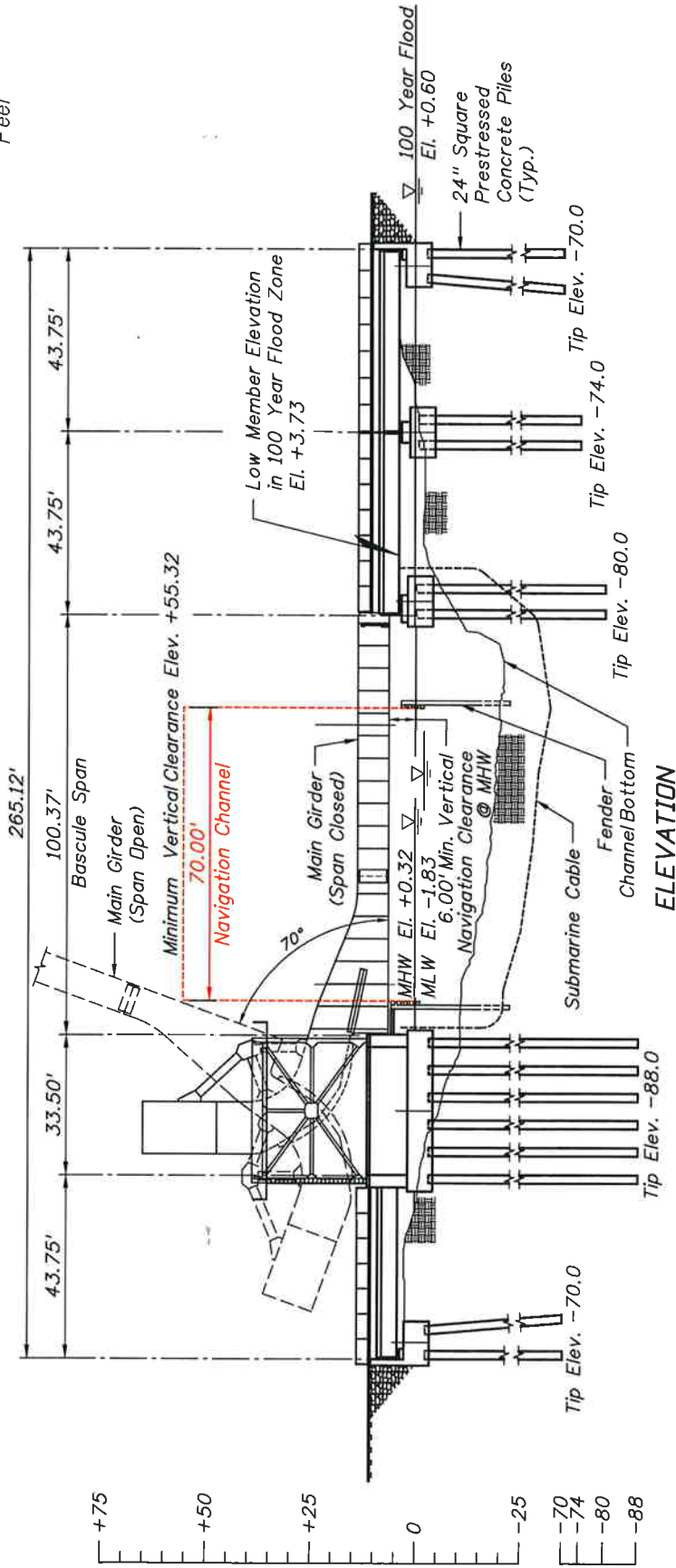
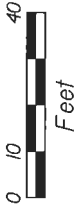
FLORIDA DEPARTMENT OF TRANSPORTATION  
DISTRICT 4

HARDESTY & HANOVER, LLP  
CONSULTING ENGINEERS  
SUNRISE, FLORIDA

DATE	MILE POINT	COUNTY	STATE
7/7/11	2.8	BROWARD	FL

SOUTH FORK OF THE NEW RIVER  
CSX RAILROAD BRIDGE REPLACEMENT  
FORT LAUDERDALE, FLORIDA BRIDGE NO. 869924

GENERAL PLAN		SHEET NO.
		2 OF 5



ELEVATION

NOTES:

1. Vertical Datum: NAVD '88.

Volume of Fill Below MHW Line	6491.54 CY
-------------------------------	------------

*Ronald Sank*  
7/29/2011

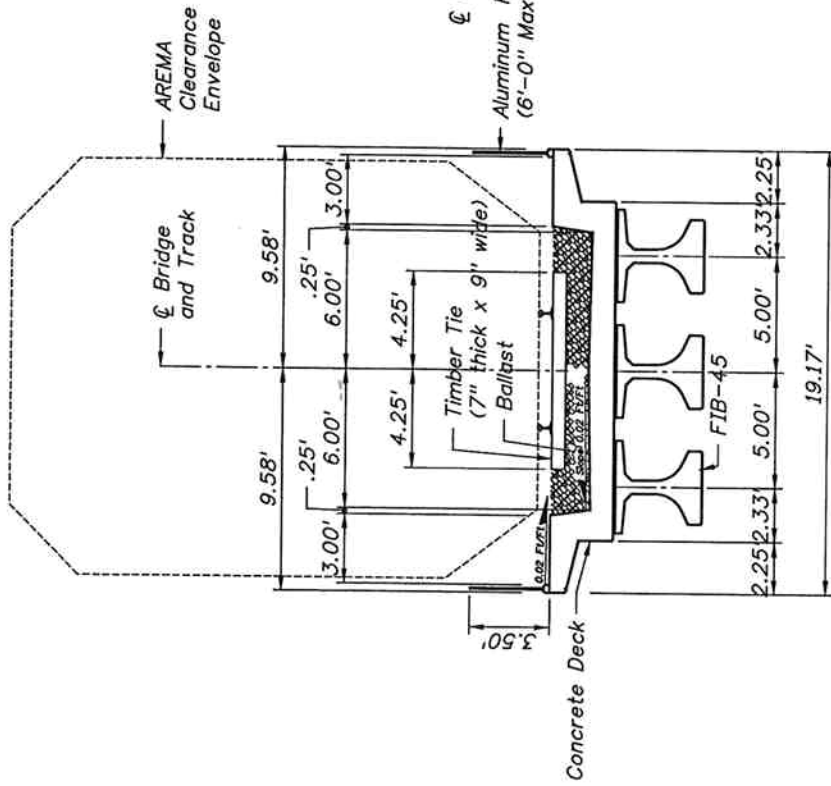
FLORIDA DEPARTMENT OF TRANSPORTATION  
DISTRICT 4

HARDESTY & HANOVER, LLP  
CONSULTING ENGINEERS  
SUNRISE, FLORIDA

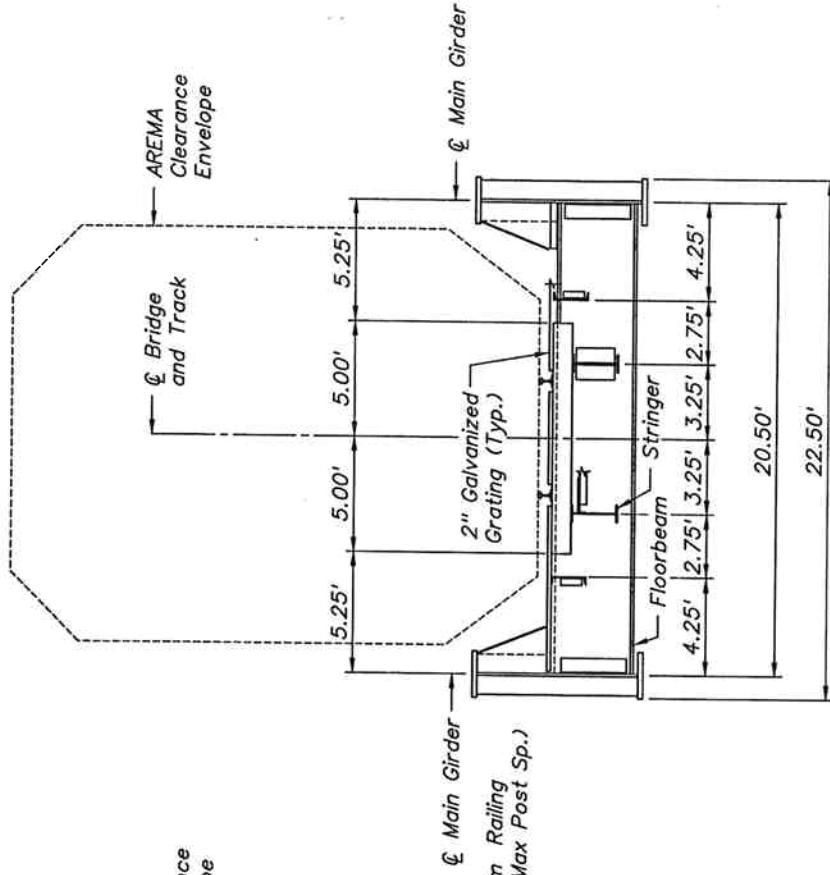
DATE	MILE POINT	COUNTY	STATE
7/7/11	2.8	BROWARD	FL

SOUTH FORK OF THE NEW RIVER  
CSX RAILROAD BRIDGE REPLACEMENT  
FORT LAUDERDALE, FLORIDA BRIDGE NO. 869924

ELEVATION	SHEET NO. 3 OF 5
-----------	---------------------



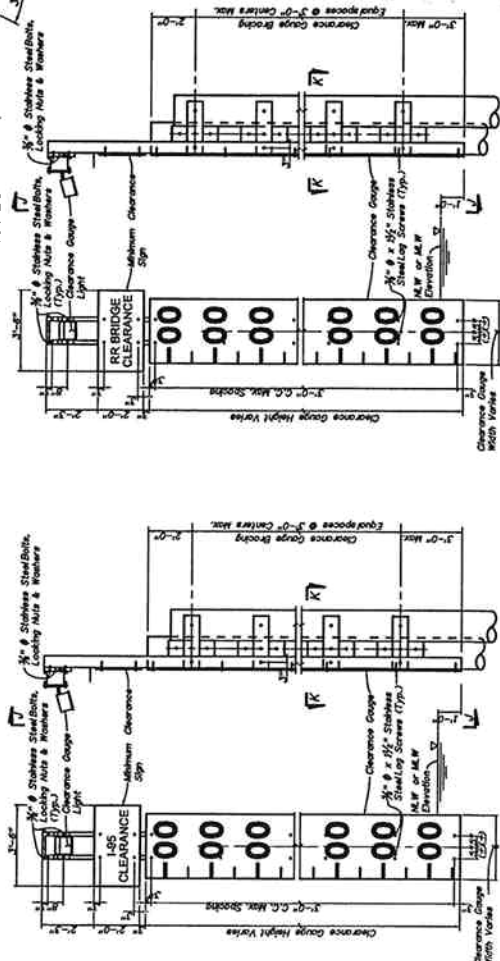
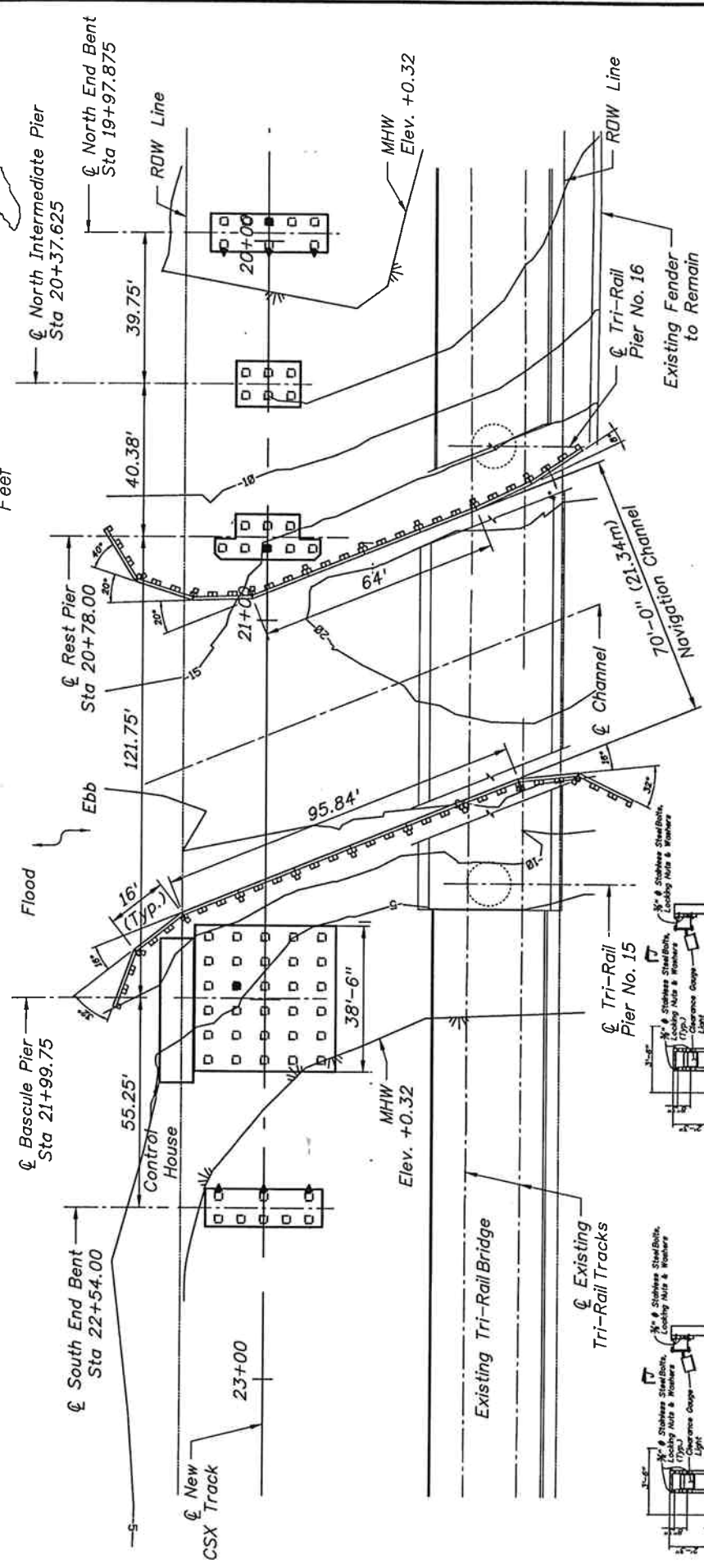
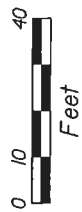
APPROACH SPAN TYPICAL SECTION



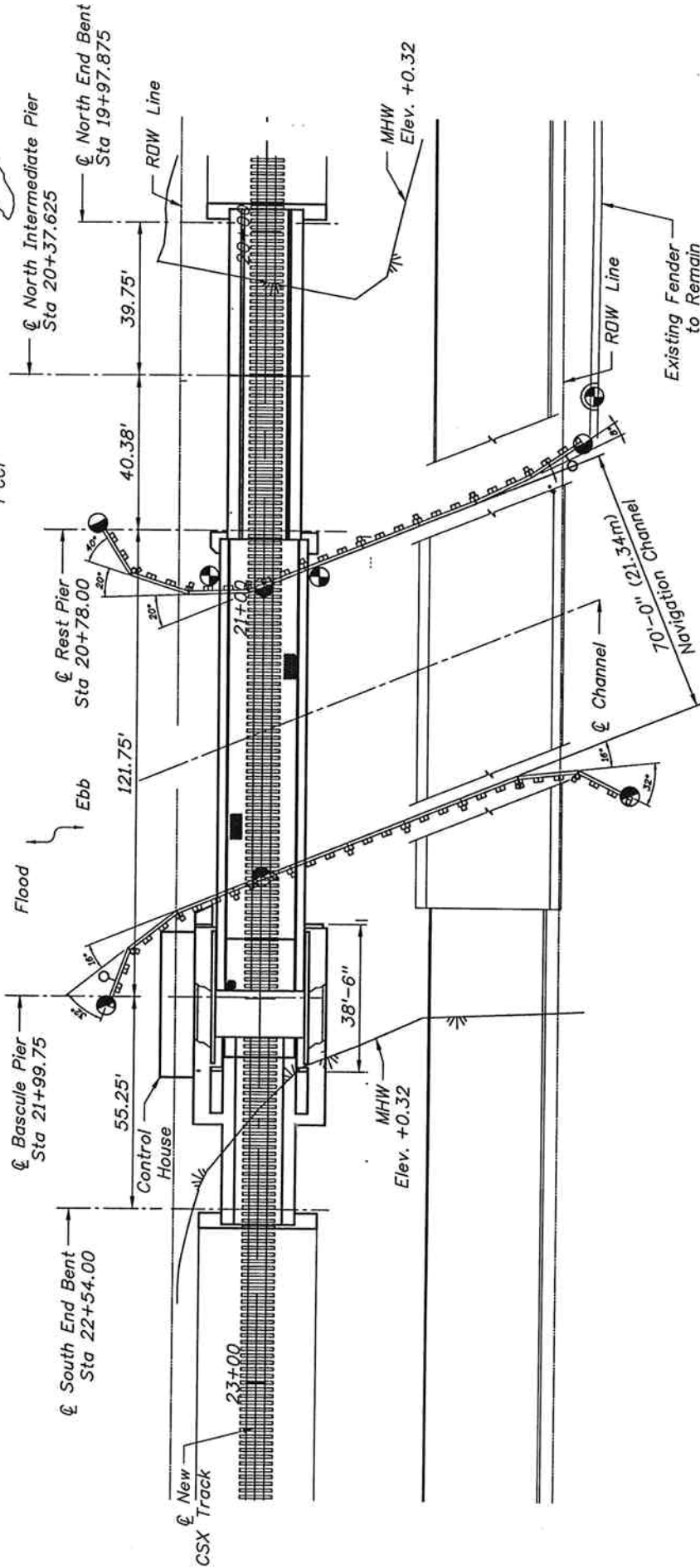
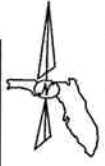
MOVABLE SPAN TYPICAL SECTION



FLORIDA DEPARTMENT OF TRANSPORTATION  
 DISTRICT 4  
 HARDESTY & HANOVER, LLP  
 CONSULTING ENGINEERS  
 SUNRISE, FLORIDA  
 DATE: 7/7/11 MILE POINT: 2.8 COUNTY: BROWARD STATE: FL  
 SOUTH FORK OF THE NEW RIVER  
 CSX RAILROAD BRIDGE REPLACEMENT  
 FORT LAUDERDALE, FLORIDA BRIDGE NO. 869924  
 SHEET NO. 4 OF 5  
 TYPICAL SECTIONS  
 [Signature] 7/8/2011



FLORIDA DEPARTMENT OF TRANSPORTATION DISTRICT 4		HARDESTY & HANOVER, LLP CONSULTING ENGINEERS SUNRISE, FLORIDA		STATE FL
DATE 7/7/11	MILE POINT 2.8	COUNTY BROWARD	SOUTH FORK OF THE NEW RIVER CSX RAILROAD BRIDGE REPLACEMENT FORT LAUDERDALE, FLORIDA BRIDGE NO. 869924	
FOUNDATION/FENDER LAYOUT			SHEET NO. 5 OF 5	



- Clearance Gauge Light
- 180° Red Fender Light
- ◐ 180° Red/Green Span Light
- ◑ Red/Green Navigation Traffic Light

FLORIDA DEPARTMENT OF TRANSPORTATION DISTRICT 4			
HARDESTY & HANOVER, LLP CONSULTING ENGINEERS SUNRISE, FLORIDA			
DATE	MILE POINT	COUNTY	STATE
7/7/11	2.8	BROWARD	FL
SOUTH FORK OF THE NEW RIVER CSX RAILROAD BRIDGE REPLACEMENT FORT LAUDERDALE, FLORIDA BRIDGE NO. 869924			
BRIDGE LIGHTING PLAN			SHEET NO. 1 OF 1

